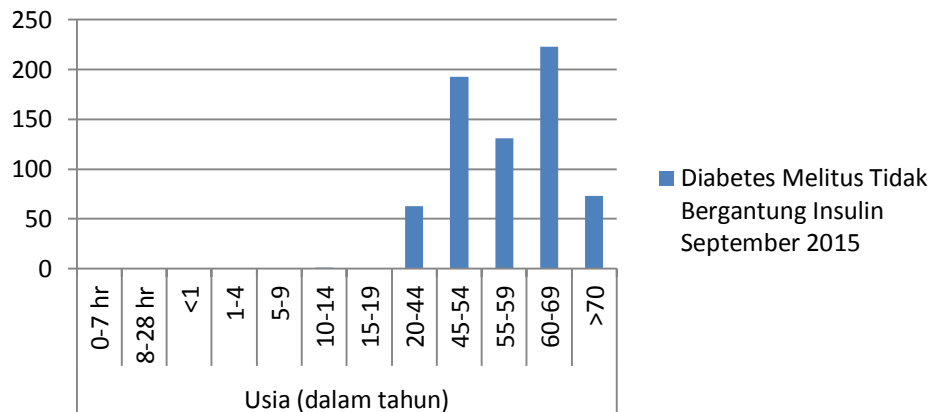
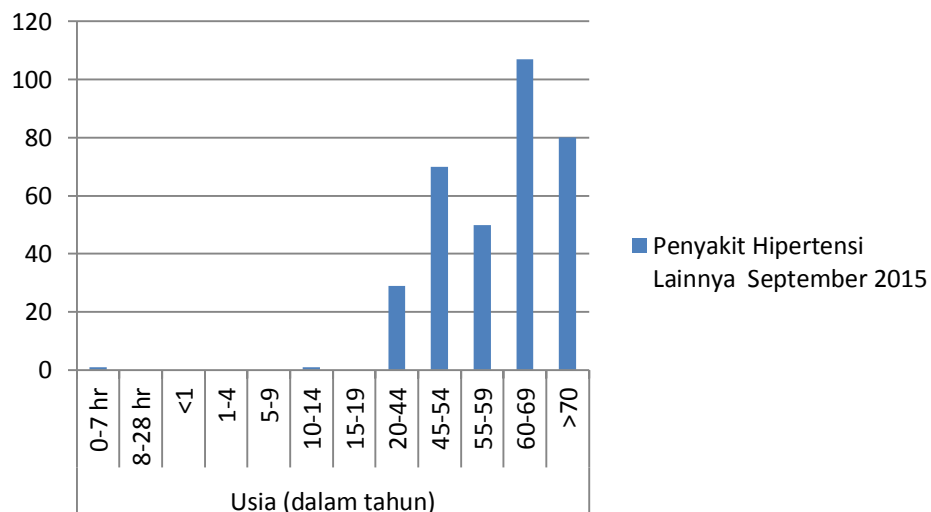


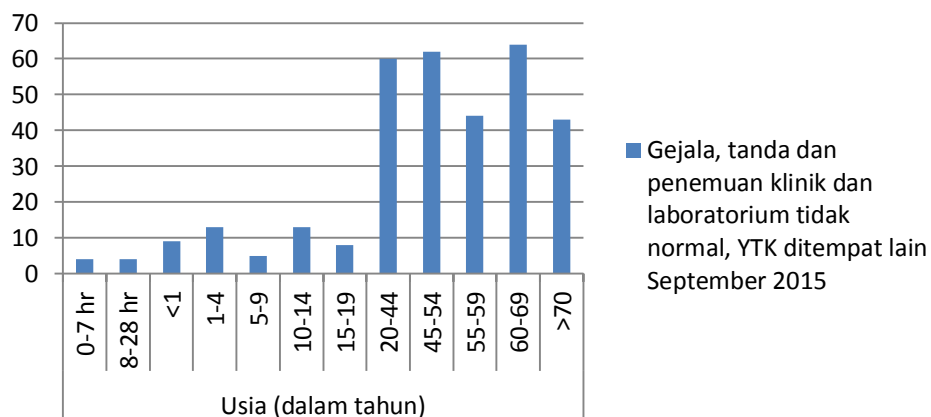
### Diabetes Melitus Tidak Bergantung Insulin



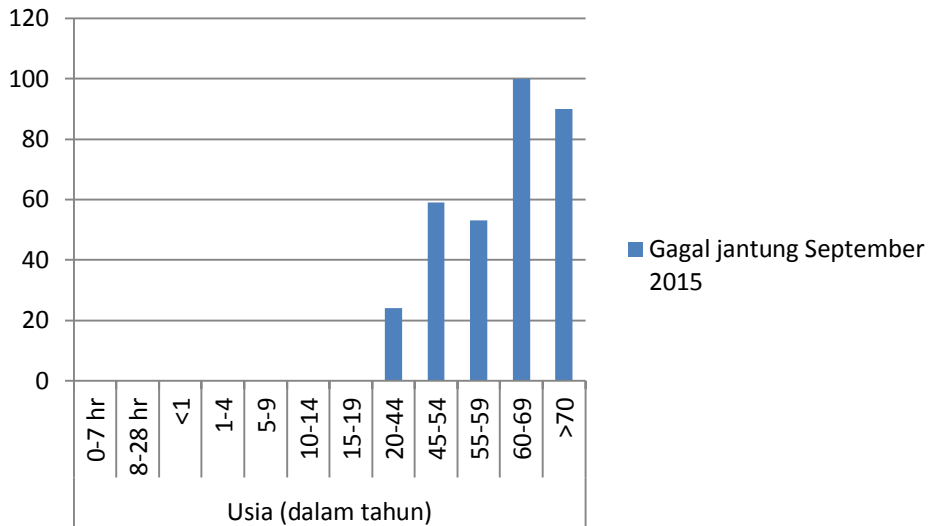
### Penyakit Hipertensi Lainnya



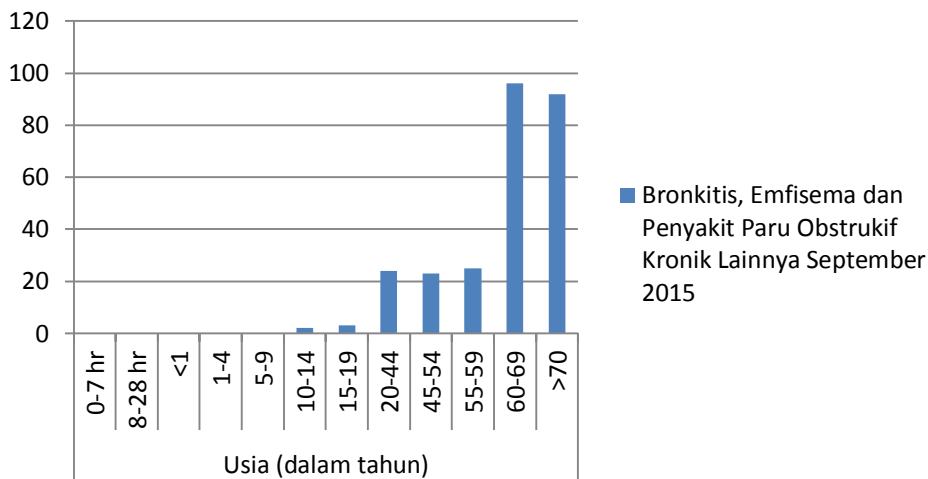
### Gejala, Tanda Dan Penemuan Klinik Dan Laboratorium Tidak Normal, Ytk Ditempat Lain



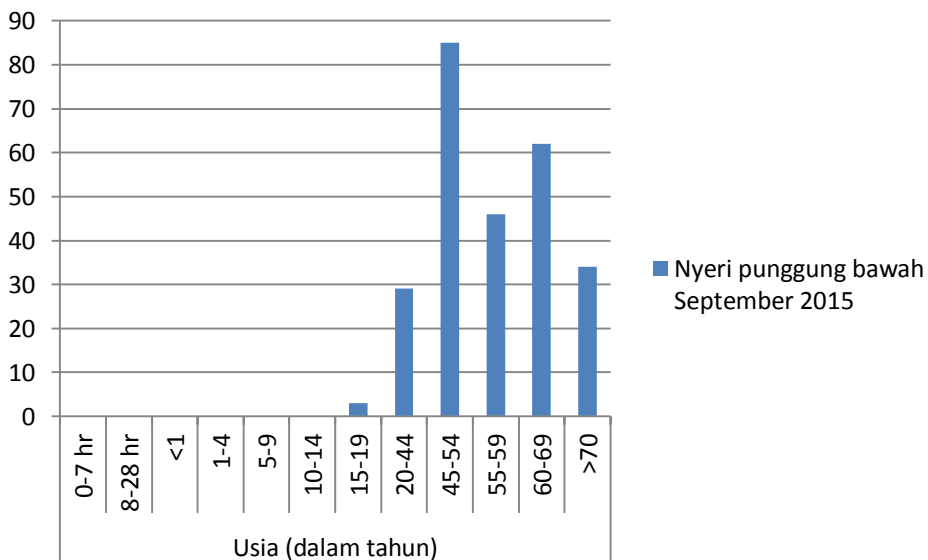
## Gagal Jantung



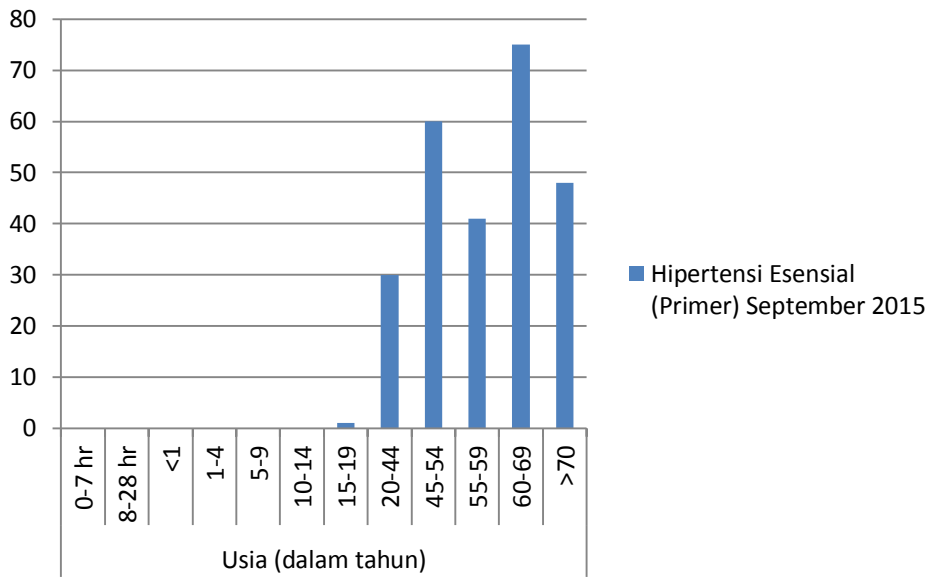
## Bronkitis, Emfisema dan Penyakit Paru Obstruktif Kronik Lainnya



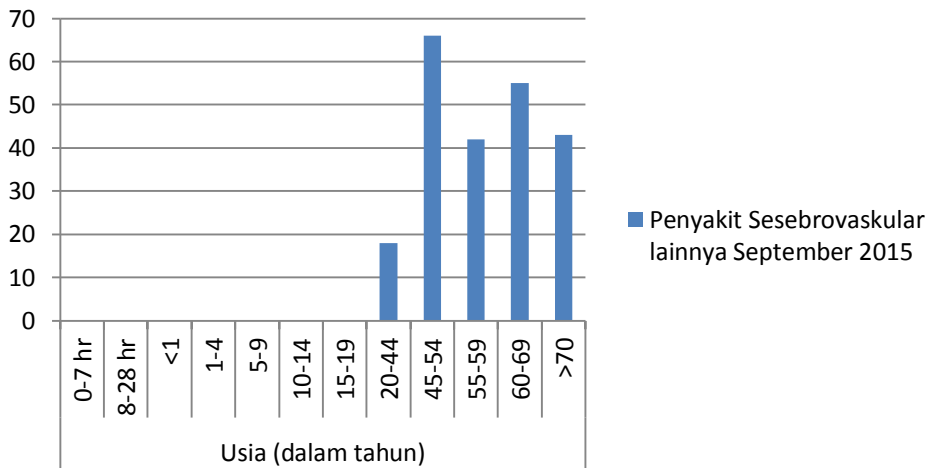
## Nyeri Punggung Bawah



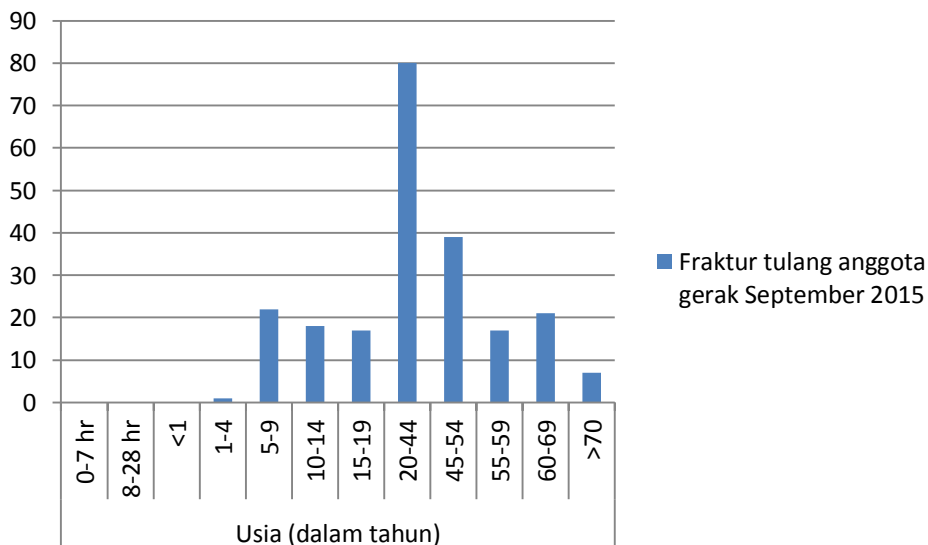
## Hipertensi Esensial (Primer)



## Penyakit Sesebrovaskular lainnya



## Fraktur Tulang Anggota Gerak



# Osteoarthritis

